

Retrotec 2200 Calibrated Fans

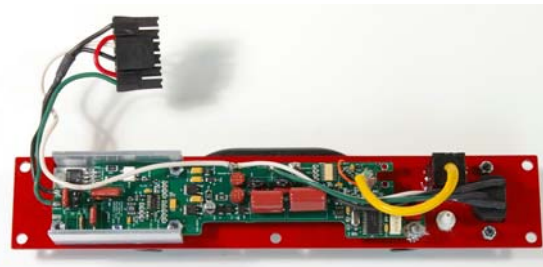
A New concept in automated flow measurement.



A 2200-Series Fan on the high flow range. A precision piezometric ring on the inlet motor nacelle ensures accurate flow readings. Eight-point fan mount makes it the strongest made.



Back of fan showing fan top.



Fan top turned over reveals the built-in computer that:

1. allows the DM-2A to control the fan.
2. regulates the speed which will fluctuate otherwise.

Precision calibration with back-pressure compensation. Individual Calibration Certificates available for increased accuracy.



Fast strap mounting into hard panel or Aluminum frame

The 2200-Series fans are designed for testing any residential house or enclosure from 9 ft² (0.8 m²) of leakage down to tight houses and small enclosures with 15 in² (97 cm²).



7 Flow Ranges - test any house from 50 to 15 Pa without having to change ranges.



Most powerful fan made. 6300 cfm (10,872 m³/hr) at 50 Pa.



Strong - "Space Age" lightweight but stiff foam sandwich construction.

Pressurize and/or depressurize flip fan around to accurately measure both ways.

Retrotec Model 2200-Series Door-fan

Specifications

50 Hz will reduce maximum flow.	CFM	Liters/sec	m ³ /hr.
<i>Maximum Flow (Free Air):</i>	6,300	2,973	10,705
<i>Maximum Flow (at 50 Pa):</i>	5,600	2,643	9,514
<i>Minimum Flow (Range C1 at 10 Pa):</i>	38	18	65
<i>Accuracy:</i>	± 4% without formal calibration		
	± 2% with formal fan and gauge calibration and Retrotec software		
<i>Formal Calibration Meets:</i>	Canadian CGSB-149.1-2002 & SuperE, USA ASTM E 779 - 03, European EN 13829 & CEN, UK TS-1Energy Standards.		
	NFPA 2001- 01 & ISO 14520 Integrity standards.		
<i>Dimensions:</i>	26" x 25.5" x 9.5" (66 x 65 x 24 cm)		
<i>Weight:</i>	34 lb (15.4 kg)		
<i>Motor:</i>	Available in 115V or 230V (1000 W)		
	25ft (8m) power cord with country specific plug included		
<i>Control:</i>	Using DM-2A (or optional Manual Speed Control)		

Options for 2200-Series Fans



Manual speed control
Can be used as a backup speed control instead of the DM-2A

Precision calibration
with back pressure compensation.
Individual Calibration Certificates available for increased accuracy.



DM-2A for flow measurement with 2200 fans.
Includes automatic speed control.



Aluminum Frame & Cloth for 2200 fan.



Hard Panel for 2200 fan.



FN229 Fan Cover
Seals off front or back, sealing and protecting fan



Standard Fan Case
Includes shoulder strap and Velcro closures. Stable gauge platform.



Flex-Duct Fits over the fan inlet or outlet for advanced testing.

Specifications subject to change without notice.

Infiltrometer is a registered trademark of Retrotec.



Retrotec Energy Innovations Ltd.

Phone (604) 732 0142

Fax (604) 737 0162

info@retrotec.com

www.retrotec.com