

## Cloth Door Panel



AL114 — Corner Block Kit



AL107 — Aluminum Frame Replacement Knob



AL115 — Expander Block Kit



AL113 — Channel Guide Kit



AL106 — Cam Lever Replacement Kit

# Cloth Door Panel

## Step 1: Secure the door

- Select a doorway, between 29.5" to 41.5" in width, and 51.5" to 95" in height.
- The door must be held open securely during testing.



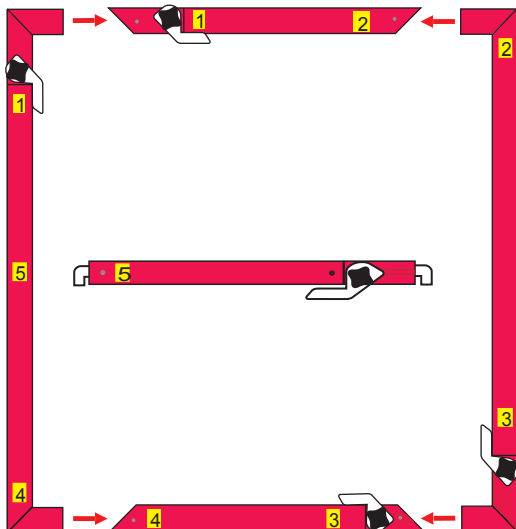
## Step 2: Unpack the Aluminum Frame

- Remove the frame pieces from the case.
- A complete set includes one cloth panel, two long and two short frame parts, a crossbar, and a fan strap (attached to crossbar).
- Optional crossbar/frame extenders or cloth panels can be ordered if required.



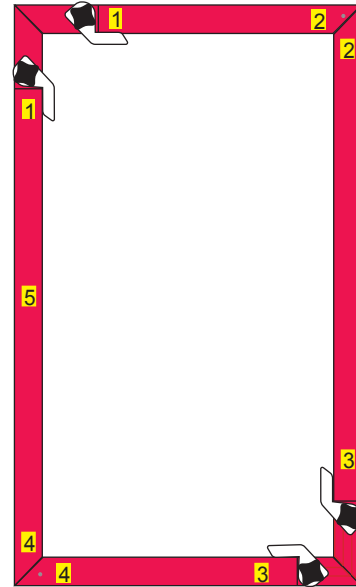
## Step 3: Lay out the pieces

- Arrange the aluminum frame sections on the floor.
- Match the corners according to the numbers stamped on each section.
- Ensure all cam levers are "unlocked" (cam handles should be parallel to frame).



## Step 4: Assemble the corners

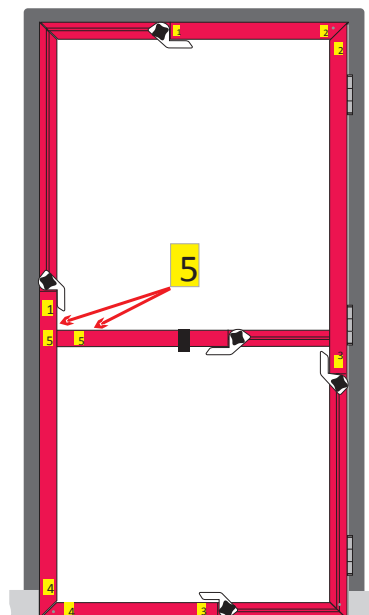
- Press in the spring-loaded button and slide the sections together until the spring-loaded button locks the pieces into position.
- Loosen all four black knobs to allow the frame sections to be resized.



**Tip:** If any of the pieces are loose, use the included Allen Key to tighten the screws.

## Step 5: Size the frame to the doorway

- Position the frame in the doorway, and extend the frame until each side is in contact with the door frame.
- Tighten the black knobs but leave the cam levers in the "unlocked" position.
- Insert and extend the crossbar into slots at position '5'.



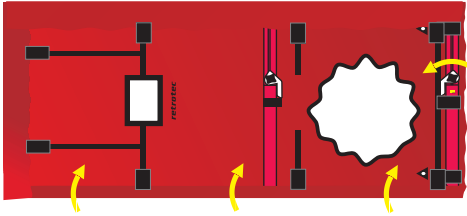
**Tip:** Fit the frame so that it is tight enough to remain standing in the doorway, but can be removed with a slight pull.

# Cloth Door Panel

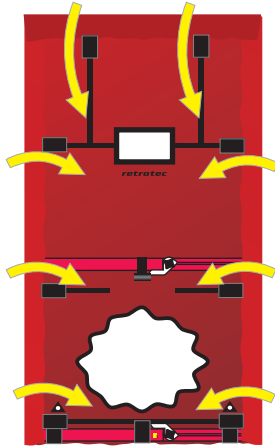
## Step 6: Attach the cloth panel

- Unfold the cloth panel and drape it over the frame.
- Attach the bottom Velcro tabs first, evenly along the bottom of the frame.

**Tip:** Setting the frame on its side, or flat on the floor, will make it easier to attach the cloth panel. Make sure the black knobs and cams are still accessible once the panel is attached.



- Fold the cloth panel over the top, right and left of the frame.
- Connect the vertical and horizontal Velcro strips to secure the cloth.
- Make sure that the fan hole is not stretched, or the fan will not have a proper seal when mounted in the panel cloth.



## Step 8: Engage cam levers

- Engage the cam levers on the frame at the top, left, right, and bottom and center locations.
- Tug on the frame to ensure a tight fit.



**Tip:** If any of the pieces are loose, use the included Allen Key to tighten the screws.

## Step 7: Replace the cloth panel

- Place the assembled cloth panel in the doorway.
- If the frame does not fit snugly, loosen the black knobs, and extend the frame tight against the door frame.
- Holding the frame taut, tighten all black knobs as shown in the picture.

**Tip:** Step on bottom of frame while securing the cams, to ensure a tight fit.



## Double fan cloth (optional)

- Mount two fans with the optional two-fan cloth plus a second crossbar.



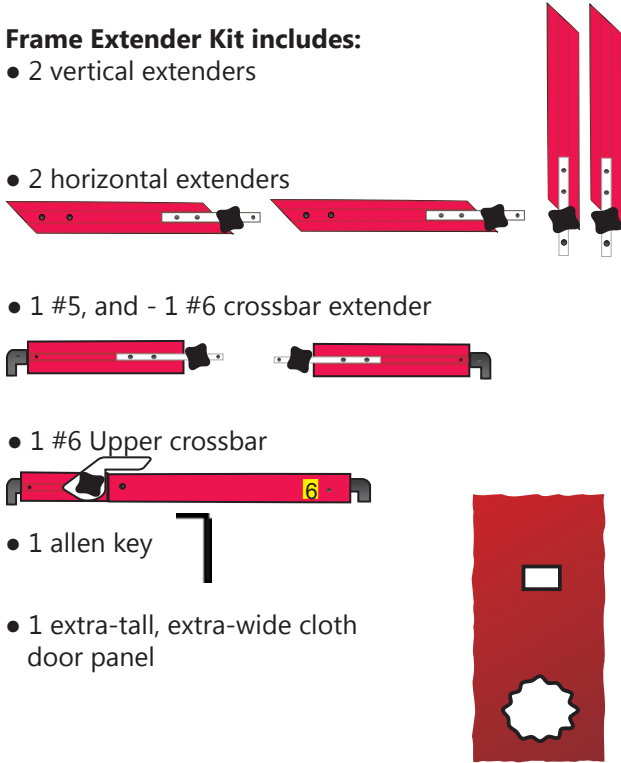
# Cloth Door Panel (optional)

## Frame extender kit

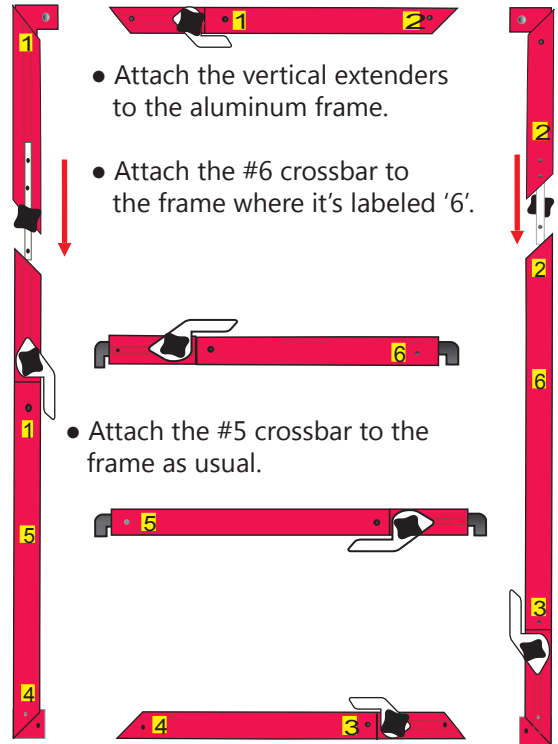
The aluminum frame can be extended in both width and height with the optional Frame Extender Kit.

### Frame Extender Kit includes:

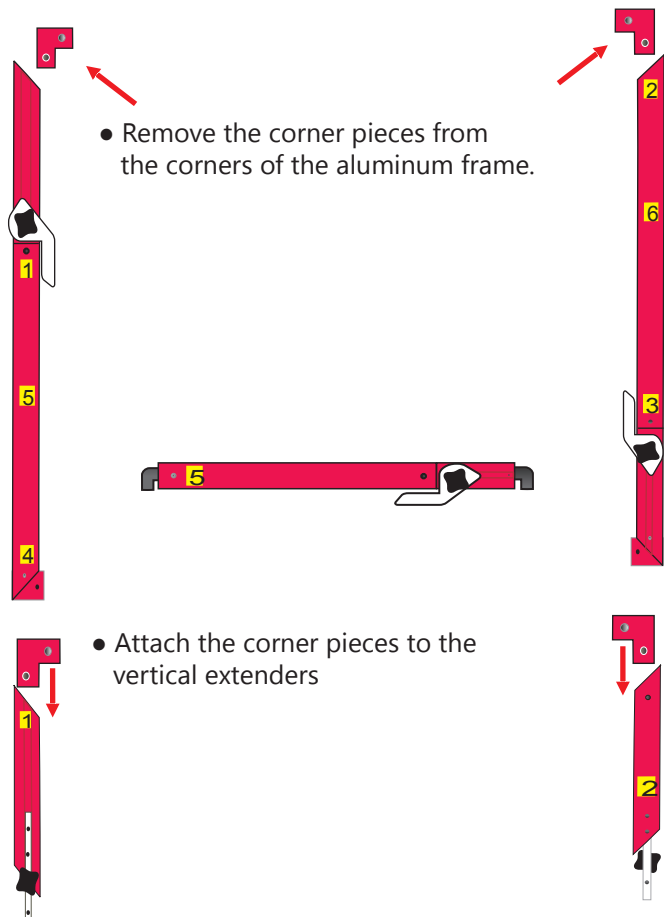
- 2 vertical extenders
- 2 horizontal extenders
- 1 #5, and - 1 #6 crossbar extender
- 1 #6 Upper crossbar
- 1 allen key
- 1 extra-tall, extra-wide cloth door panel



## Extend the height — Part 2

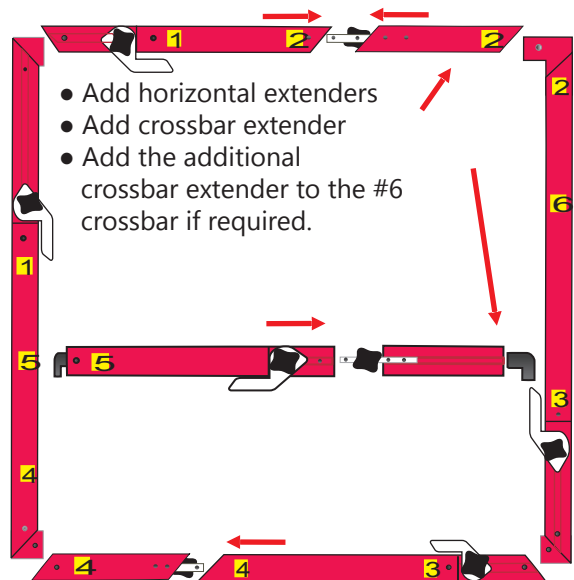


## Extend the height — Part 1



## Extend the width

Attach the connector pieces to the horizontal sections, tightening the black knob in the connector hole to secure the frame.



## Extend the height and width

Use both the height and width extender kits to maximize the size of the frame. Attach the extra-tall, extra-wide cloth panel